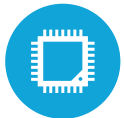




HIGHLIGHTS



Projected Capacitive Touch Screen



Qualcomm Snapdragon 450 up to 1.8Ghz



3GB Ram



15.6" Widescreen LCD with Slim Bezel



Android 9

SPECIFICATIONS

PROCESSING

CPU: Qualcomm Snapdragon 450, 8-core, up to 1.8Ghz
RAM: 3GB RAM

LCD PANEL

LCD Size: 15.6"
LCD Backlight type: LED
Brightness: 300 nits
Maximum Resolution: 1920 x 1080
Touch Screen Type: Projected Capacitive
Screen: Bezel-less True Flat

STORAGE

eMMC: 32GB

DIMENSIONS

14.5" W x 12.1" H x 9.0" D
EMC & Safety: FCC / CE Class A, LVD
Operating Temperature: 41°F ~ 95°F (0°C ~ 35°C)

POWER

Power Supply: 65W, with lock

I/O PORTS

USB: 1x USB 3.0-Type C, 2x USB 3.0, 2x USB 2.0, 1x MicroUSB for OTG
2nd Video: proprietary miniDP video port (not compatible with regular miniDP)
Serial: 2xDB9 (Powered RS232), Optional port
Gigabit LAN: 1xRJ45
Cash Drawer Port: 1 RJ11
DC Jack: 1x4PIN DIN (with latch)

OPTIONAL PERIPHERALS

MSR USB: Encrypted Option Available
Fingerprint Reader: USB, Steel Coat
Rear LCD: 11.6" or 15.6" (both options support touch)
Customer Display: 2 x 20 LCM Display
Pin Pad Mount (supports various pinpads)
Barcode Reader: 2D barcode reader
POE support: optional

NETWORKING

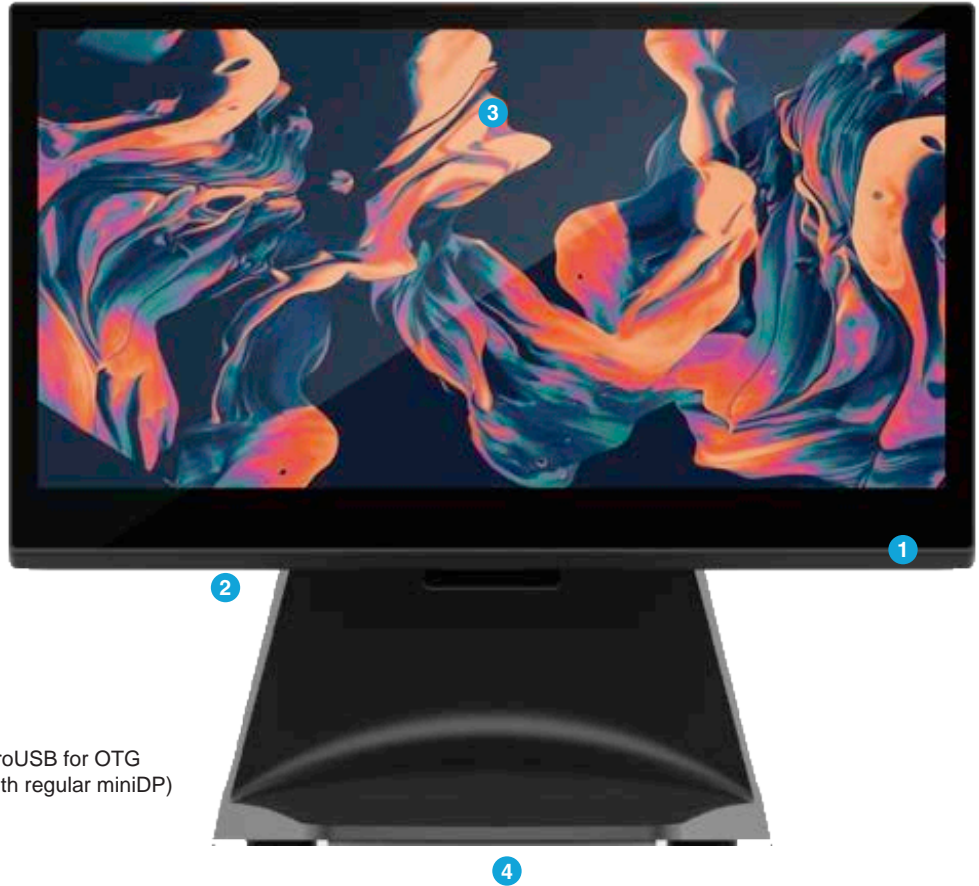
Wireless LAN: 802.11 b/g/n/ac
Gigabit LAN
Bluetooth 4.2

MOUNTING

VESA Mount 100 x 100

OS SUPPORT

Android 9



KEY FEATURES

1	Projected Capacitive Touch Screen
2	Multiple Port Options
3	15.6" Widescreen
4	Same reliability as the Pulse Ultra